

특징 (Features)

1. 조작부와 접점부 상·하 분리형으로 설계되었습니다.
Operating and contact part was planned in separation style
2. 취부홀 Ø22, Ø25, Ø30로 설계하여 선택 사용시 용이 합니다.
Attached hole Ø22, Ø25, Ø30 The selection with is various it used
3. 슬림형은 판넬에서 2.5mm 돌출로 측면으로부터 걸림이 없습니다.
Slim type is being 2.5mm projections from panel, there is no jam from the side
4. 스냅 동작 접점 블록은 기본 1a1b로 설계되었습니다.
Contact block was planned basic 1a1b
5. 광원 출력부는 LED를 기본으로 제작되었습니다.
A light source was produced with the LED
6. SH02210-7003A, SH02210-7004A, SH02210-7005A
UL 300 AC-15 EN60947-5-1 인증진행중
7. 보호구조 : IP65
Protected structure

LED 램프 (LED Lamp)

1차 입력전압 (Rated voltage)	정격전류 (Rated current)
12/24V d.c	22mA
110/220V	8mA 이하
380V a.c	24mA
125V d.c	4.5mA
220V d.c	4.5mA

기본회로 (Circuit diagrams)



방수 스위치



KG M 제어용 스위치



성능 (Performance)

항 목(List)	종 류(Items)	KG Series 제어용 스위치(Ø22, Ø25, Ø30)
정격용량 (Rating)		125V d.c 1A / 250V a.c 5A
절연저항 (Insulating resistance)		100MΩ이상(Min 100MΩ)
내전압 (Withstand voltage)		2,500V a.c, 50/60Hz에서 1분간(2,500V a.c, 50/60Hz 1min)
접촉저항 (Contact resistance)		50mΩ 이하
내진동 (Vibration protection)		10~55Hz 복진폭 3mm(10~55Hz Vibration Width 3mm)
내충격 (Shock protection)		약 50G(500%)
사용주의 온도 (Ambient temperature)		-10°C~+50°C
사용주의 습도 (Relative humidity)		45~85% RH
개폐빈도 (Open/close time)		최대 30회/분(Max 30/1min)
수명 (Lifetime)	전기적 (Electrical)	10만회 이상/1,800h(Min 0.1mil/1,800h)
	기계적 (Mechanical)	50만회 이상/1,800h(Min 0.5mil/1,800h)

INNOVATE NOW!

 전자부저(Electric buzzer)

형명 구성 (Name composition)

KGB N V2 B

B : 전자부저 (Electric buzzer)

상부 형태 (Upper part form)

N : 일반형Ø22 (Normal type) Plastic guide

H : 고급형Ø22 (High-grade type) Aluminum guide

C : 일반매입형Ø25 (Normal buried type) Plastic guide

J : 고급매입형Ø25 (Luxury buried type) Aluminum guide

Y : 일반매입형Ø30 (Normal buried type) Plastic guide

L : 고급매입형Ø30 (Luxury buried type) Aluminum guide

정격전압 (Voltage)

D2 : 12/24V d.c V2 : 110/220V a.c

음색 (Tone)

B : 단속음 (Beep)

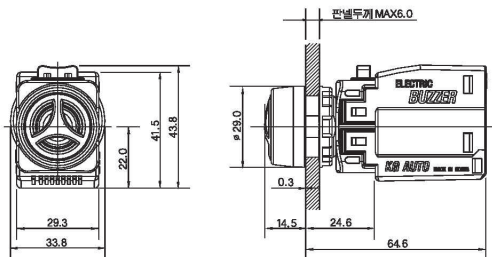
정격 (Rated)

전압 (Voltage)	소비전류 (Consumption current)	음량 (dB)	주파수 (Hz)
12/24V d.c	Max, 27mA	95dB	-
110/220V a.c	Max, 27mA	95dB	50~60Hz

외형 및 도면 (External form/ Drawing) IP65 제외



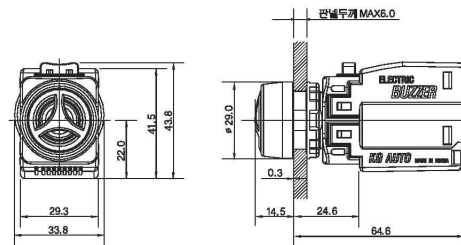
N형Ø22 플라스틱 돌출형
(Normal N-type plastic guide)



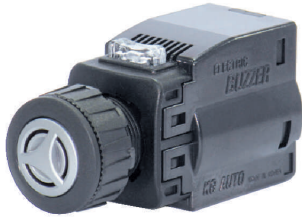
KGB - ND2B / 12~24V d.c
KGB - NV2B / 110~220V a.c



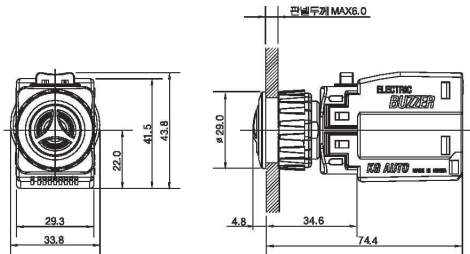
H형Ø22 알루미늄 돌출형
(High-grade H-type aluminum guide)



KGB - HD2B / 12~24V d.c
KGB - HV2B / 110~220V a.c



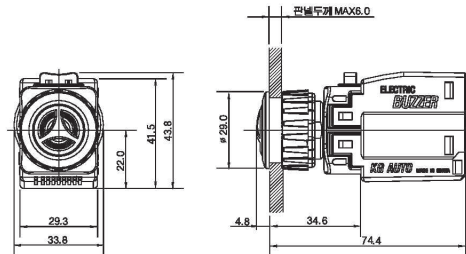
C형Ø25 플라스틱 매입형
(Normal buried C-type plastic guide)



KGB - CD2B / 12~24V d.c
KGB - CV2B / 110~220V a.c



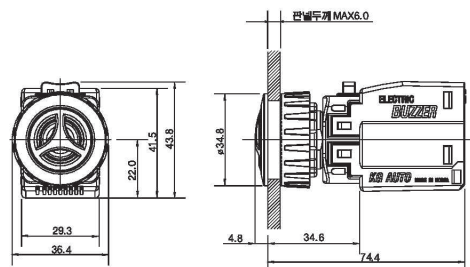
J형Ø25 알루미늄 매입형
(Luxury buried J-type aluminum guide)



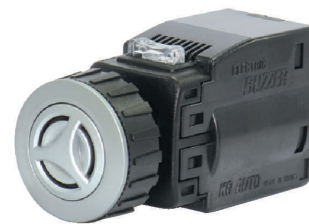
KGB - JD2B / 12~24V d.c
KGB - JV2B / 110~220V a.c



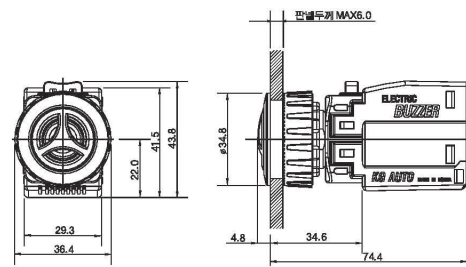
Y형Ø30 플라스틱 매입형
(Normal buried Y-type plastic guide)



KGB - YD2B / 12~24V d.c
KGB - YV2B / 110~220V a.c



L형Ø30 알루미늄 매입형
(Luxury buried L-type aluminum guide)



KGB - LD2B / 12~24V d.c
KGB - LV2B / 110~220V a.c